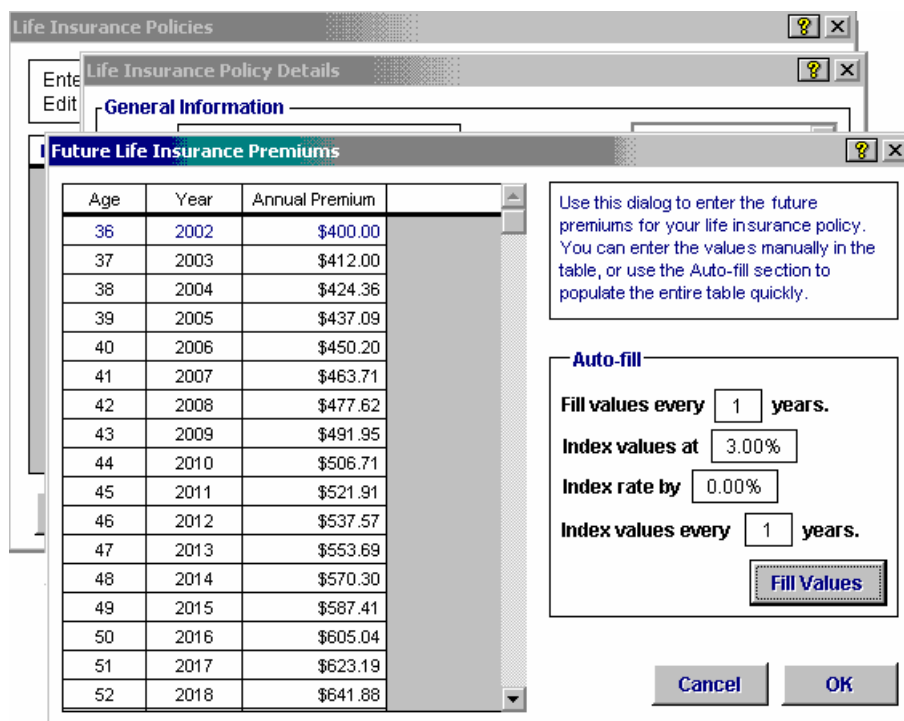


Using auto-fill to project future premiums, CSVs, and death benefits

Insurance is a fundamental aspect of your clients' financial plans. NaviPlan Standard has the ability to index the three monetary parts of an insurance policy. Depending on the features and type of policy entered, NaviPlan Standard can index cash surrender values, death benefits, and premiums. This auto-fill feature allows NaviPlan to calculate inflation or investment growth within the policy, which in turn allows for more precise future planning.

Procedure

1. To use the auto-fill feature, go to the **Insurance & Estate Planning** category – Life Insurance tab. You must select the **If <client> dies and <co-client> survives** check box to make the *Coverage Owned* button accessible. Click the **Coverage Owned** button, and then insert a policy.



2. The *Life Insurance Policy Details* dialog box opens, where you can enter the policy's details. In this dialog box click the **Edit Future Premiums** button. The Future Life Insurance Premiums dialog box opens where you can specify the amount by which you would like to index the premiums.
3. Once you add the rate for indexing, click the **Fill Values** button to update the premiums to the indexed values. Scroll through the years to see the indexed premium owed per year.

It is reasonable to index the premium to the plan because it is coming from cash flow as an expense, and therefore the buying power of the premiums will change as

inflation changes. You can apply additional indexing to the base rate by using the *Index rate by* field. Entering a value here allows you to apply incremental increases to the values that have already been indexed.

You can also indexed the cash surrender value and death benefits in the same manner by selecting *Edit Future Death Benefits & CSVs* in the *Life Insurance Policy Details* dialog box for the insurance policy, and then following the same steps outlined above.

Life Insurance Policy Details

General Information

Name: Life Insurance Premium Payer: James
 Type: Whole Life Insured(s): James
 Effective Date: Dec 31 2001 Policy Owner: Joint
 Beneficiary: Anne

Premiums

Payment Frequency: Annual Premiums cease at (Age/Date): Never
 Modal Premium \$400.00
 Annual Premium \$400.00 Disability Waiver Included
 Adjusted Cost Base Before 2001 \$0.00 [Edit Future Premiums...](#)

Death Benefit and CSV's

Death Benefit: \$0.00 Death Benefit(s) payable when Coverage Ceases
 Current CSV: \$0.00 CSV Payable with Death Benefit
 Coverage ceases at (Age/Date): Never [Edit Future Death Benefits & CSV's...](#)

Policy Surrender

Surrender Date: Never CSV: \$0.00 Calculated [Cancel](#)
[OK](#)