

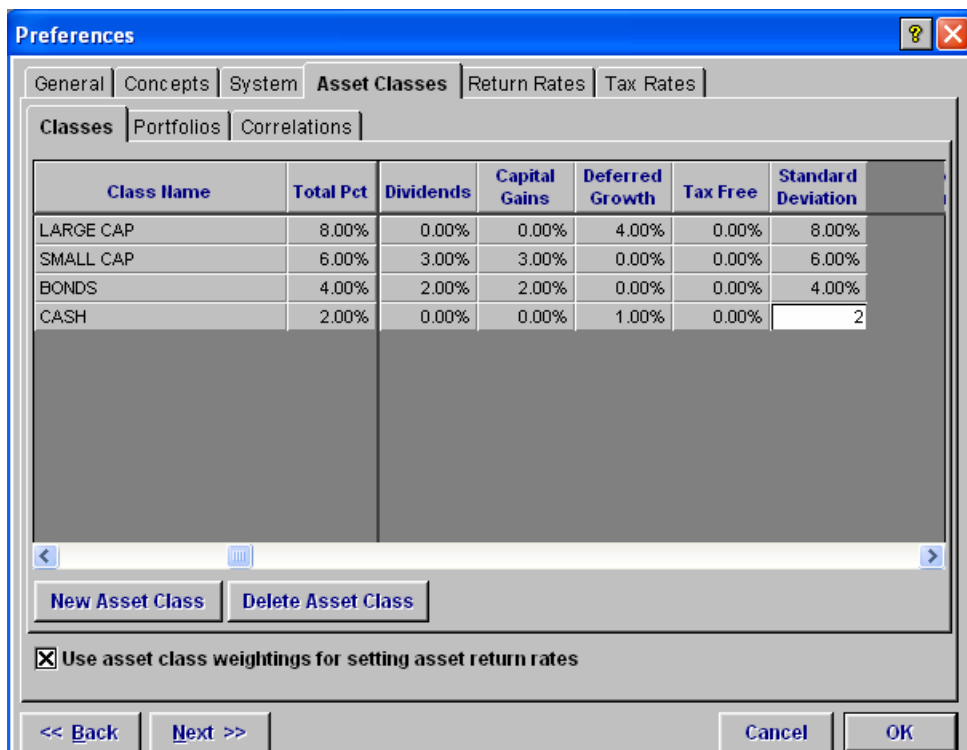
Copying asset class weightings settings to another computer

NaviPlan preserves all user preference settings in the eisi.ini file. You can copy the user preference file to other installations of NaviPlan if you want them to use the same preferences. However, if you only want to copy the asset class weightings information to another NaviPlan installation, you have to first create an assetclassweightings.ini file.

Creating the assetclassweightings.ini file

You can use the assetclassweightings.ini file to store all of your asset class weightings settings. This separate file must be created in the installation directory.

One of the benefits of the assetclassweightings.ini file is that it can be created before or after you have entered the asset class weightings on the *Edit* menu – *Preferences* – *Asset Classes* tab.



For example, if the NaviPlan Standard installation directory is the default (i.e., C:\NaviPlan\Standard), follow these instructions:

1. Double-click the **My Computer** icon on your desktop.
2. Double-click the **C:** drive.
3. Double-click the **NaviPlan** folder.
4. Double-click the **Standard** folder.
5. Go to the **Tools** menu, and then select **Folder Options**.
6. Go to the **View** tab, and then clear the **Hide extensions for known file types** check box.
7. Click **OK**.
8. Go to the **File** menu, and then select **New – Text Document**. This will create a text file named *New Text Document.txt*.
9. Right-click the new file name, and then select **Rename**. Rename this file to **assetclassweightings.ini** (no spaces or quotation marks). You may receive a warning message stating: *If you change a file name extension, the file may become unusable. Are you sure you want to change it?* Click **Yes**.
10. Within NaviPlan, go to the **Edit** menu, and then select **Preferences**. Go to the **Asset Classes** tab, and then add or modify the asset class weightings settings. Click **OK**, to save these settings in the new *assetclassweightings.ini* file.

To import the original installation's default asset class weightings into the *Preferences* of another NaviPlan installation, copy the *assetclassweightings.ini* file into the *Standard* folder of another NaviPlan installation.

Note: NaviPlan Standard can only import asset class weightings from another installation of NaviPlan Standard. Also, NaviPlan Extended can only import asset class weightings from another installation of NaviPlan Extended.