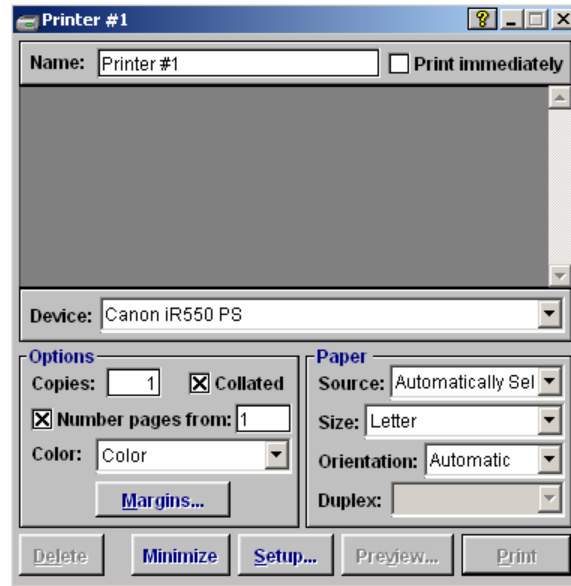


Restoring the printer icon to the desktop

Has your printer icon disappeared from your desktop? The icon vanishes if the *Printer* dialog box is opened and then closed using the *Close Window* button (the X), instead of minimized.



To restore the icon to the desktop, go to the **File** menu, and then select **New – Printer**. The *Printer* dialog box reappears.

You can change any settings in the *Printer* dialog box, including the printer device, the *Print Immediately* option, or the name of the printer. When you are done, click the **minimize** button and the printer icon displays on the desktop.

