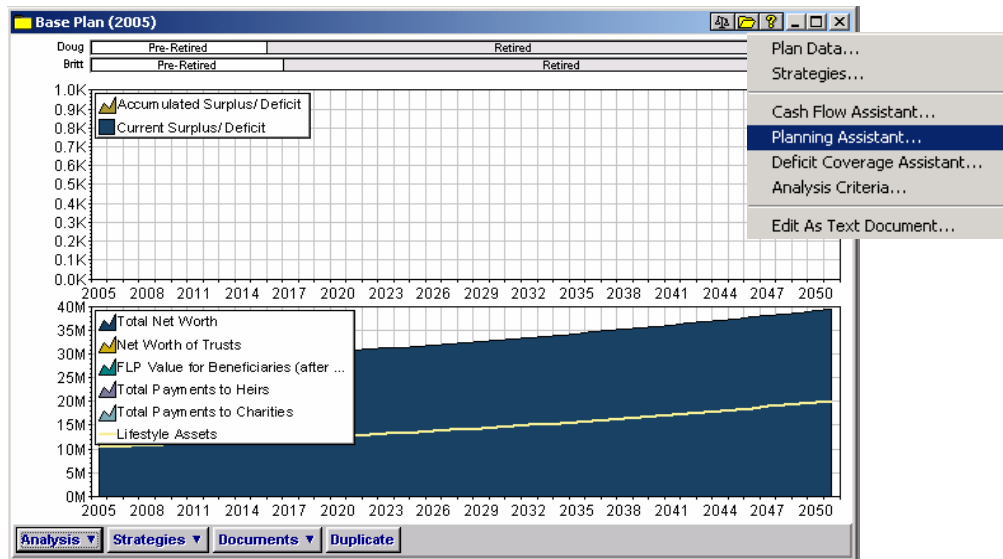


## Entering Strategies through the Planning Assistant

NaviPlan Extended provides a quick and easy way to enter new strategies using the *Planning Assistant* feature.

To use the *Planning Assistant*, click the file folder button in the top-right corner of the plan window, and then select **Planning Assistant**.



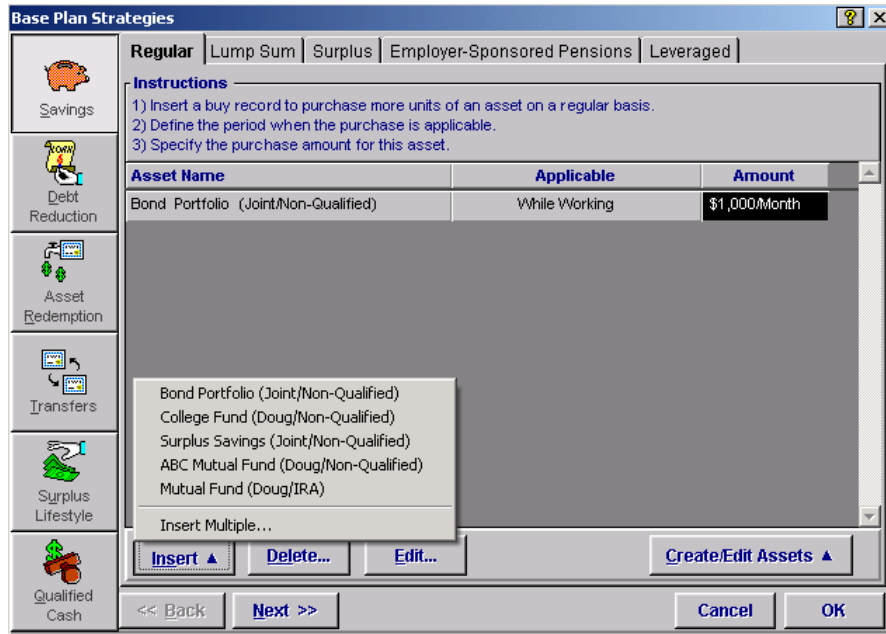
The *Planning Assistant* dialog box has a row of shortcut buttons across the top. For this example, click the *Savings* button.

Year	Doug	Britt
2005	\$4,000	\$4,000
2006	\$4,000	\$4,000
2007	\$4,000	\$4,000

**Recommendation Details:**  
 You can use the **Regular Savings Strategy** to increase your IRA contributions for these years.  
 You can use the *Create/Edit Asset* button at the bottom of the **Regular Savings Strategies** to create new IRA assets (Spousal or Non-Spousal)

Regular Savings...

Click the Regular Savings button Regular Savings..., to enter a strategy. The *Base Plan Strategies* dialog box opens. You enter a strategy the same way, whether you use the *Planning Assistant* or the *Strategies* menu.



When you have entered your data, click **OK** to close the *Base Plan Strategies* dialog box. To verify the effects of each newly created strategy, select the **Graphs** option to view the results.

