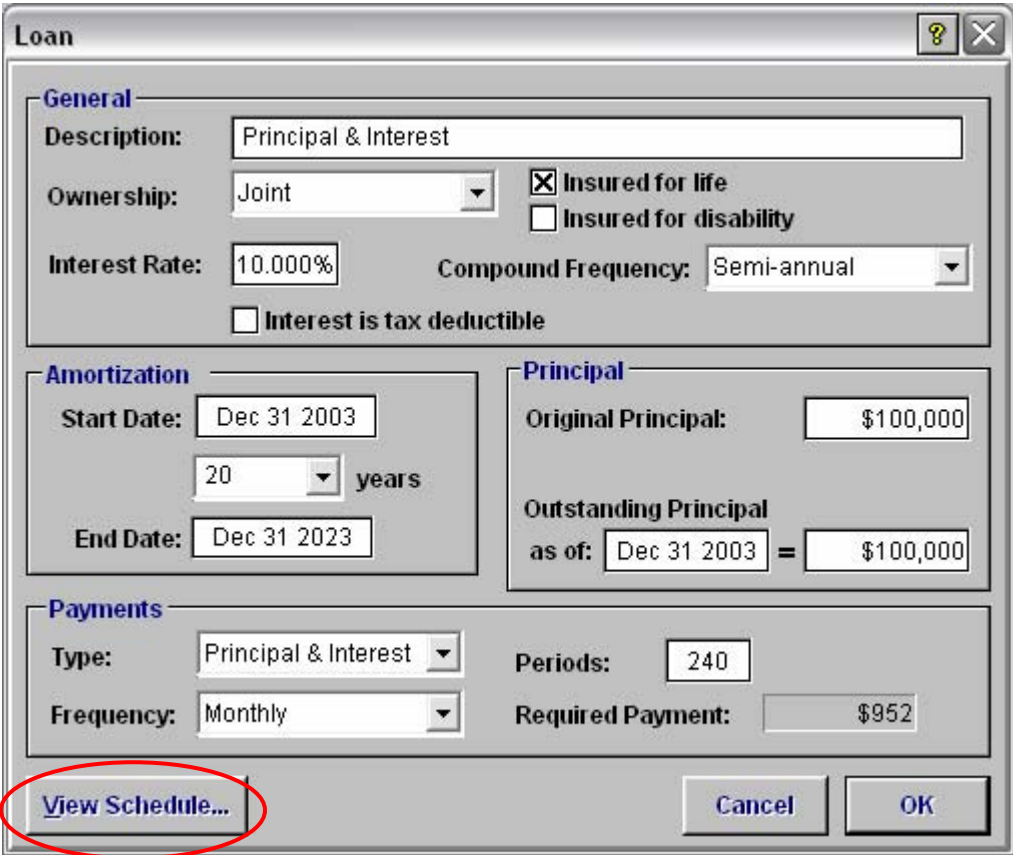
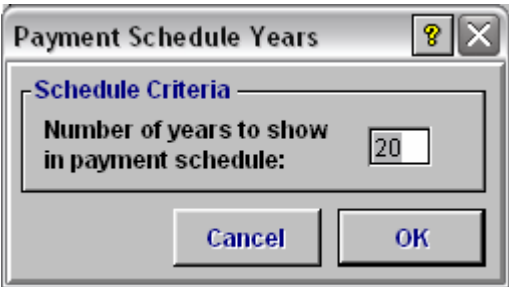


View Loan Schedule in NaviPlan Standard

In the *Loans* category, once you have entered a loan in the *Loan* dialog box, you can view the loan schedule by clicking *View Schedule*. A *Payment Schedule Years* dialog box opens.



Enter the number of years to show in the payment schedule, and then click **OK**.



Once you have selected the number of years to display, a *Liability Payment Schedule for Principal & Interest* opens. You can see the payment schedule for the selected liability, based on the data entered, including a breakdown of each payment into principal and interest, balance outstanding as well as totals for each component at the end of each year.

Liability Payment Schedule for Principal & Interest					
Payments for Principal & Interest					Dec 17 2004
Method: Principal & Interest					
Payment Date	Total Money Owning Before Payment	Principal & Interest Payment	Interest Payment	Principal Payment	New Principal Outstanding
Jan 30 2004	100,000.00	951.66	816.48	135.18	99,864.82
Feb 29 2004	99,864.82	951.66	815.38	136.28	99,728.54
Mar 30 2004	99,728.54	951.66	814.27	137.40	99,591.14
Apr 30 2004	99,591.14	951.66	813.15	138.52	99,452.62
May 30 2004	99,452.62	951.66	812.02	139.65	99,312.97
Jun 30 2004	99,312.97	951.66	810.88	140.79	99,172.18
Jul 30 2004	99,172.18	951.66	809.73	141.94	99,030.25
Aug 30 2004	99,030.25	951.66	808.57	143.10	98,887.15
Sep 30 2004	98,887.15	951.66	807.40	144.27	98,742.88
Oct 30 2004	98,742.88	951.66	806.22	145.44	98,597.44
Nov 30 2004	98,597.44	951.66	805.03	146.63	98,450.81
Dec 30 2004	98,450.81	951.66	803.84	147.83	98,302.98
Totals (2004)		11,419.97	9,722.95	1,697.02	

You can click **Show totals for year of selected row** to reset the column totals to reflect the total amounts outstanding and paid for a specific year. This can be completed by selecting the payment for a specific year and then by clicking **Show totals for year of selected row**, or by double clicking on the selected year.

Once you have finished viewing the schedule click **Done**, which returns you to the *Loan* dialog box.