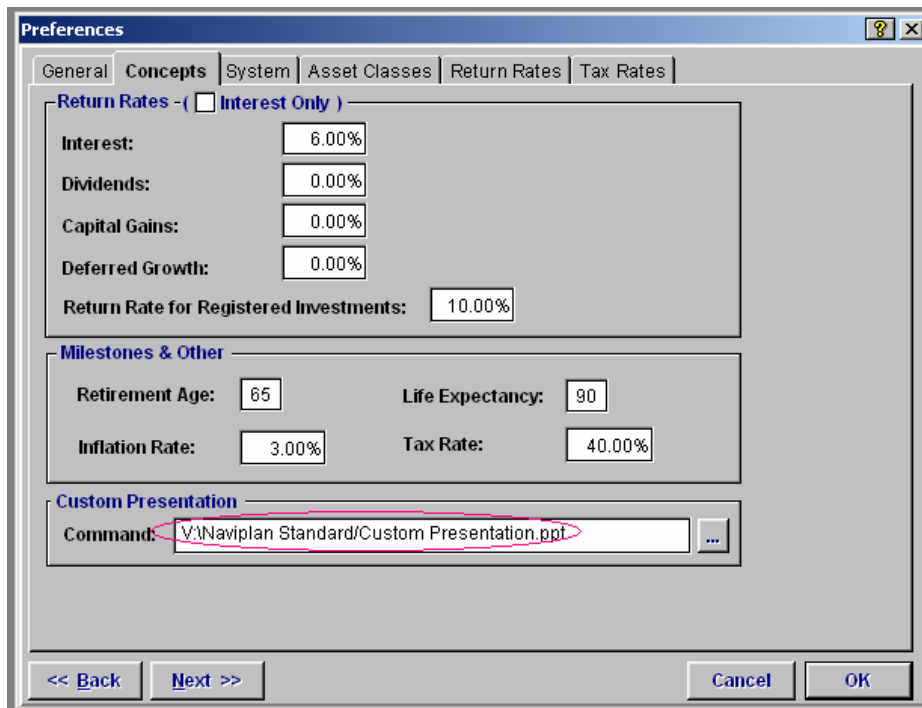


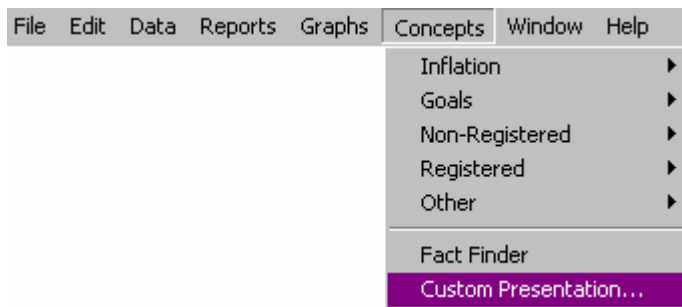
## Creating custom presentations

Did you know that you can present a *Custom Presentation* to your clients from within the NaviPlan software? For example, you may want to access a PowerPoint slide presentation after discussing the planning process with your clients.

Go to **Edit – Preferences**, and then select the **Concepts** tab. You will see a *Command* field under the *Custom Presentation* section. You need to specify the path (directory and folder) that your presentation is saved in, and then click **OK**.



Go to the **Concepts** menu, and then select **Custom Presentation**.



Your presentation imports into NaviPlan and displays on the screen for viewing.

The *Custom Presentation* feature eliminates the need to access another directory while you are working in the software.