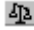
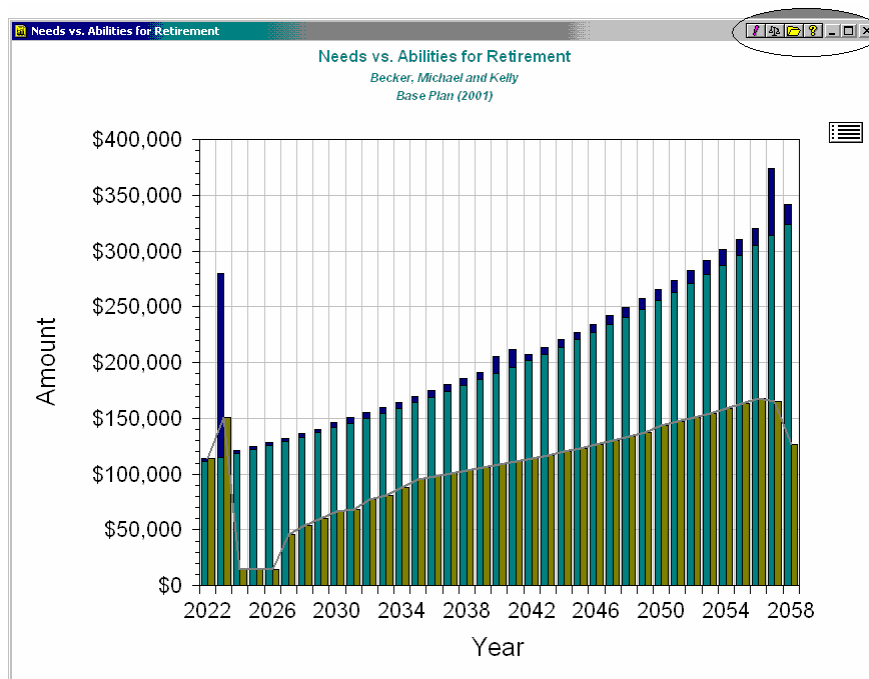


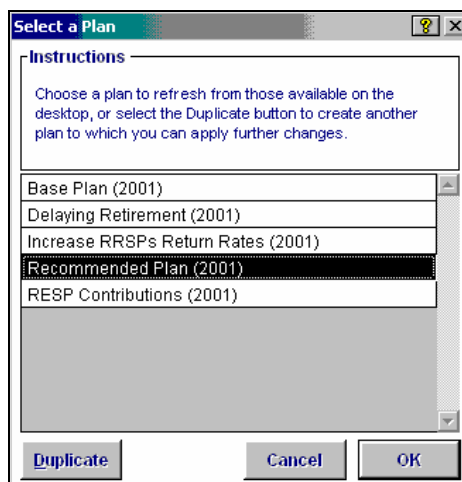
Comparing reports and graphs using NaviPlan's *Comparison* feature

NaviPlan streamlines your plan analysis tasks by letting you compare two reports or two graphs side by side on your screen. You can do this quickly and easily instead of having to create, minimize, and re-create each one in order to compare them.

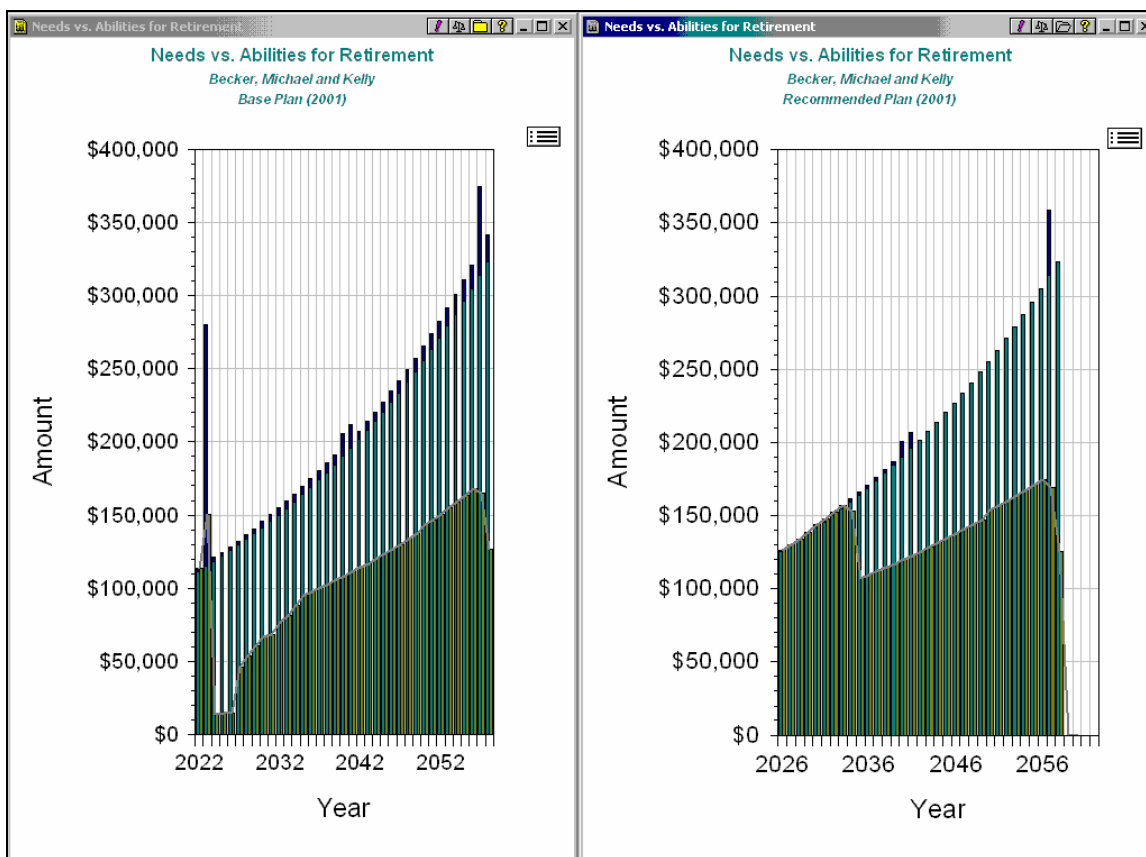
With your first report/graph displayed on the screen, click the **Comparison** button  on the toolbar in the upper right corner of the report/graph window.



The *Select a Plan* dialog box opens. Choose which plan you would like to use for comparison, and then click **OK**.



You now have a side-by-side view of your graphs from two different plans. In this example the *Base Plan* and *Recommended Plan* are compared.



Comparing reports and graphs using *Tile Horizontal* and *Tile Vertical*

You can compare two or more different reports or graphs using the *Tile Horizontal* or *Tile Vertical* feature in NaviPlan.

Open two or more reports (or graphs) on the NaviPlan desktop. Go to the **Window** menu, and then select **Tile Horizontal** to view them one above the other, or **Tile Vertical** to view them side by side.

