


Using Help in NaviPlan Extended

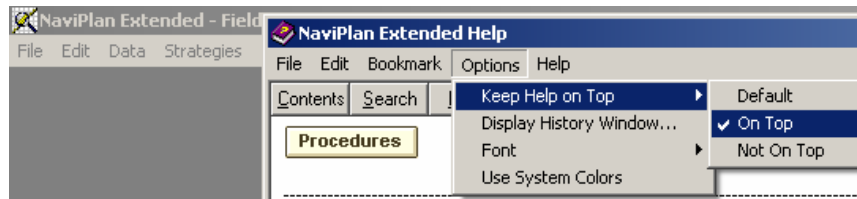
You can choose to keep the Help on the desktop at all times. This feature is useful for copying and pasting tags into document templates or for instructions that require multiple steps.

Keeping Help on the desktop

1. To open the Help, you can either click the **question mark**  button within any dialog box, or you can go to the **Help** menu, and then select an option.



2. Once the Help is open, go to the **Options** menu, and then select **Keep Help on Top – On Top**.



This feature keeps the Help on the desktop while you work within a plan or document template.