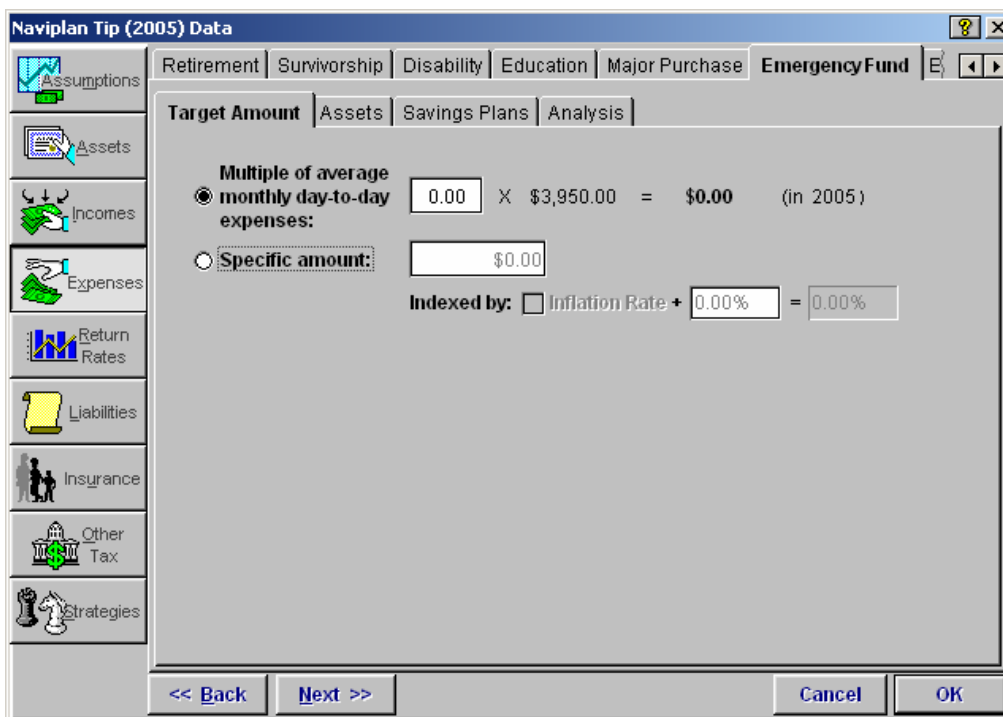


Turning off the emergency fund goal

The emergency fund goal creates a cushion to handle any unexpected financial emergency by depositing sufficient capital in an earmarked emergency fund account. The account is not available to be used in the plan.

If you do not want to use the emergency fund goal, you can turn the feature off.

The emergency fund goal may be turned off on the *Expenses* category – *Emergency Fund* tab – *Target Amount* subtab. Set the emergency fund's *Multiple of average monthly day-to-day expenses* to zero.



The corresponding reports in the NaviPlan document packages will be skipped when a document package report is generated.