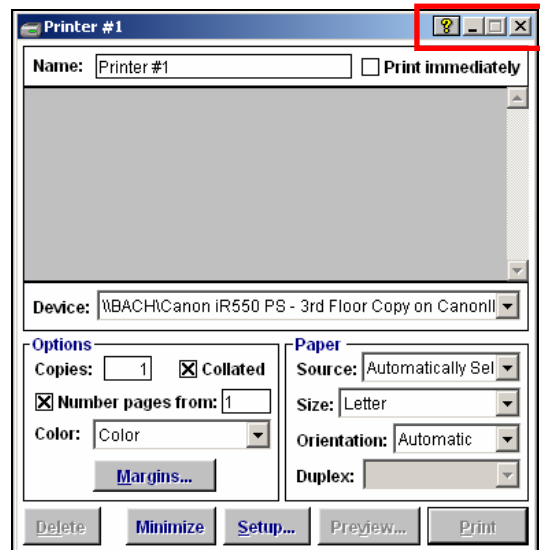


Restoring the printer icon to the desktop

Has your printer icon disappeared from your desktop? The icon will vanish if the *Printer* window is opened and then closed (instead of minimized).



To restore the printer icon to the desktop

1. To restore the icon to the desktop, go to the **File** menu, and then select **New – Printer**. The printer's dialog box appears.
2. You can change any settings in the *Printer* dialog box, including the printer device, *Print immediately* option, or the name of the printer. When you are done, click the **minimize** button and the printer icon will appear on the desktop.

