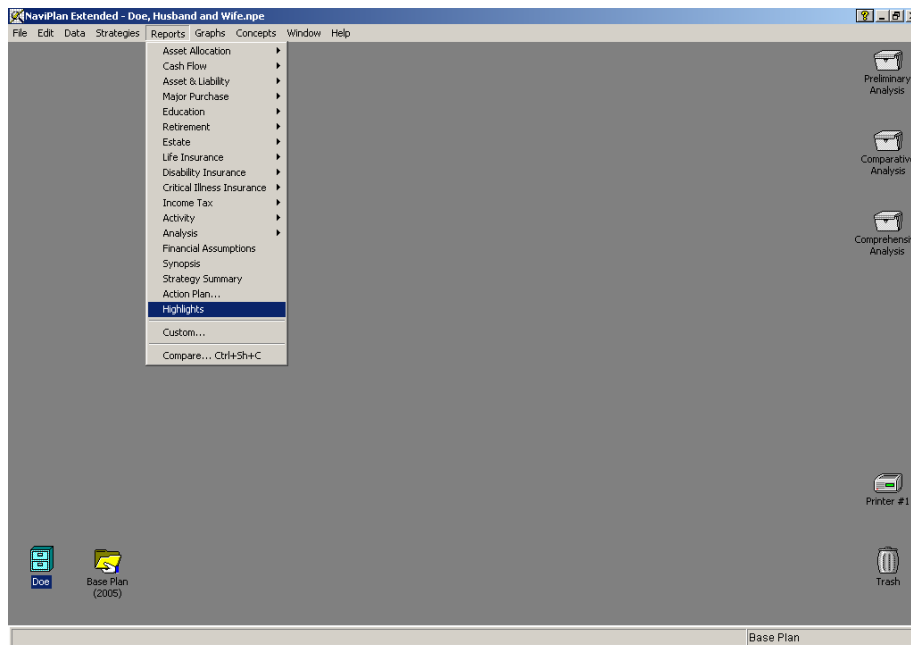
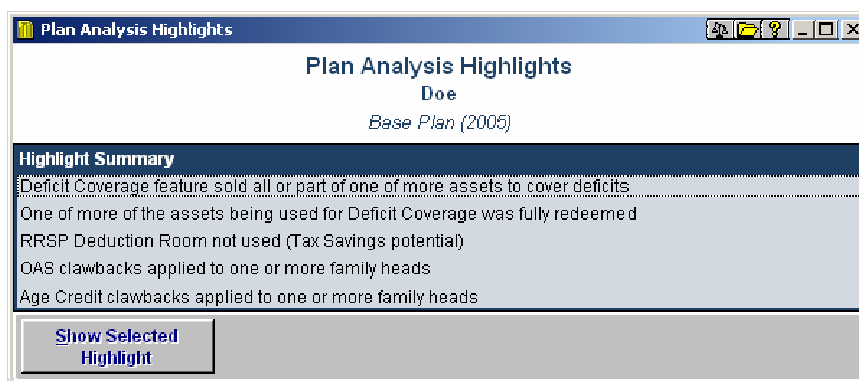


Plan Analysis Highlights report

This report displays a summary of the operations that NaviPlan Extended has performed during the analysis of the active plan. It provides an overview of the selected plan's transactions and helps to ensure all appropriate steps have been implemented in the plan. To view the report, go to the **Reports** menu, and then select **Highlights**.



The *Plan Analysis Highlights* dialog box opens. Under *Highlight Summary*, you can double-click each highlight to view details about the item. Details can also be viewed by selecting the appropriate line, and then clicking *Show Selected Highlight*.



For a complete highlight summary listing, please refer to the Help.