
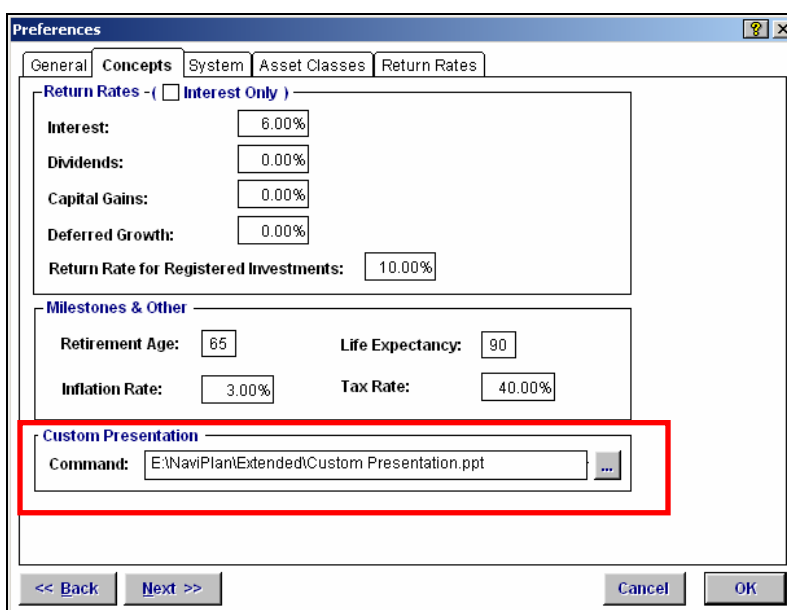


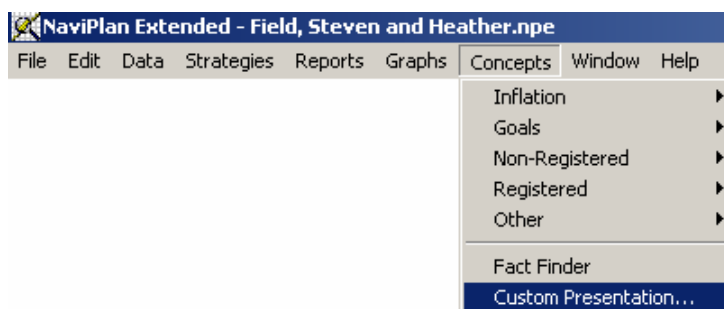
## Creating custom presentations

Did you know that you can present a custom presentation to your clients from within the NaviPlan software? You may, for example, have a PowerPoint slide presentation you would like to access after discussing the planning process with your client.

1. Go to the **Edit** menu, and then select **Preferences** to open the *Preferences* dialog box.
2. Go to the **Concepts** tab.
3. Under *Custom Presentation*, in the *Command* field, specify the path (directory and folder) that your presentation is saved in, and then click **OK**. OR, click the  (browse button) to search for the file.



4. Go to the **Concepts** menu, and then select **Custom Presentation**.



This will bring your presentation into the NaviPlan software and fill up the screen for viewing. This feature eliminates the need to access another directory while working in the software.