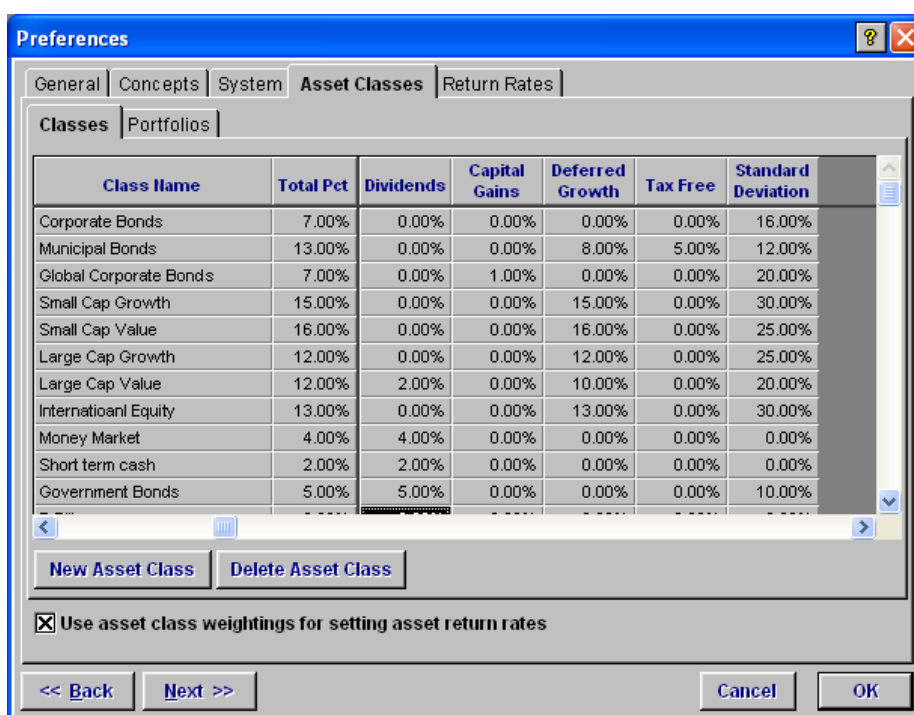


Copying asset class weightings settings to another computer

NaviPlan preserves all user preference settings in the *eisi.ini* file. This user preference file can be copied to other installations of NaviPlan that are to use the same preferences. However, should you wish to copy only the asset class weightings information to another NaviPlan installation, you have to first create an *assetclassweightings.ini* file.

You can use the *assetclassweightings.ini* file to store all of your asset class weightings settings. This separate file must be created in the installation directory.

One of the strengths of the *assetclassweightings.ini* file is that it can be created before or after the asset class weightings have been entered. Asset class weightings are entered by selecting *Preferences* from the *Edit* menu, and then going to the *Asset Classes* tab – *Classes* subtab.



Creating the assetclassweightings.ini file

If the NaviPlan Extended installation directory is the default C:\NaviPlan\Extended, follow these instructions:

1. Double-click the **My Computer** icon on your desktop.
2. Double-click the **C:** drive.
3. Double-click the **NaviPlan** folder.
4. Double-click the **Extended** folder.
5. Go to the **Tools** menu, and then select **Folder Options**.
6. Go to the **View** tab, and then clear the **Hide extensions for known file types** check box.

7. Click **OK**.
8. Go to the **File** menu, and then select **New – Text Document**. This will create a text file named *New Text Document.txt*.
9. Right-click the new file name, and then select **Rename**. Rename this file to **assetclassweightings.ini** (no spaces or quotation marks). You may receive a warning message stating, “If you change a file name extension, the file may become unusable. Are you sure you want to change it?” Click **Yes**.
10. Within NaviPlan, go to the **Edit** menu, and then select **Preferences** to open the *Preferences* dialog box.
11. Go to the **Asset Classes** tab, and then add or modify the asset class weightings settings. Click **OK** to save these settings in the new *assetclassweightings.ini* file.

To import the original installation’s default asset class weightings into the *Preferences* of another NaviPlan installation, copy the *assetclassweightings.ini* file into the Extended folder of the other NaviPlan installation.

NaviPlan Extended can only import asset class weightings from another installation of NaviPlan Extended. Also, NaviPlan Standard can only import asset class weightings from another installation of NaviPlan Standard.